



**Social and Environmental Synthesis toward Urban
Sustainability: GIS, Satellite Remote Sensing, and Unmanned
Aerial Systems**



*Wasit Wulamu, PhD, Assistant Professor
Center for Sustainability at Saint Louis University*

April 9, 2017

awulamu@slu.edu

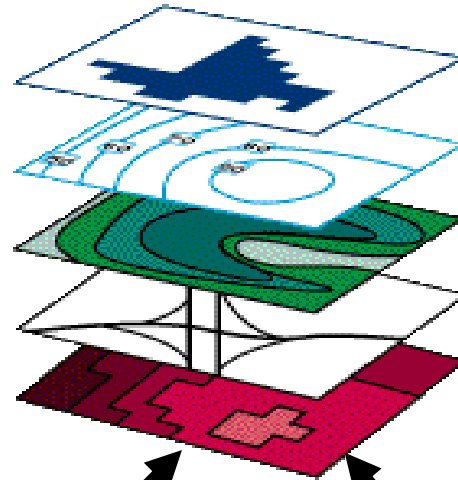


Agenda

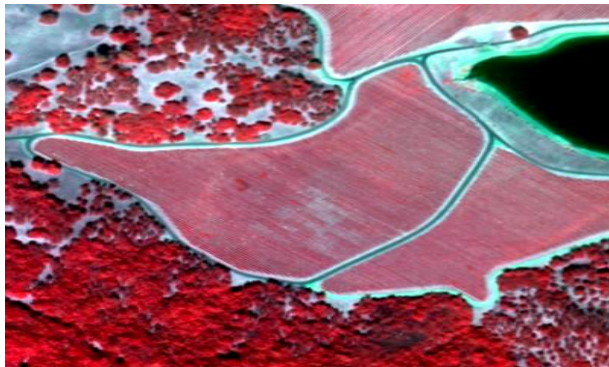
- **What does remote sensing measure?**
- **Geographic Information System**
- **Unmanned Aerial System**
- **Case studies**

Geospatial Methods

GIS (Geographic Information Systems)



RS (Remote Sensing)

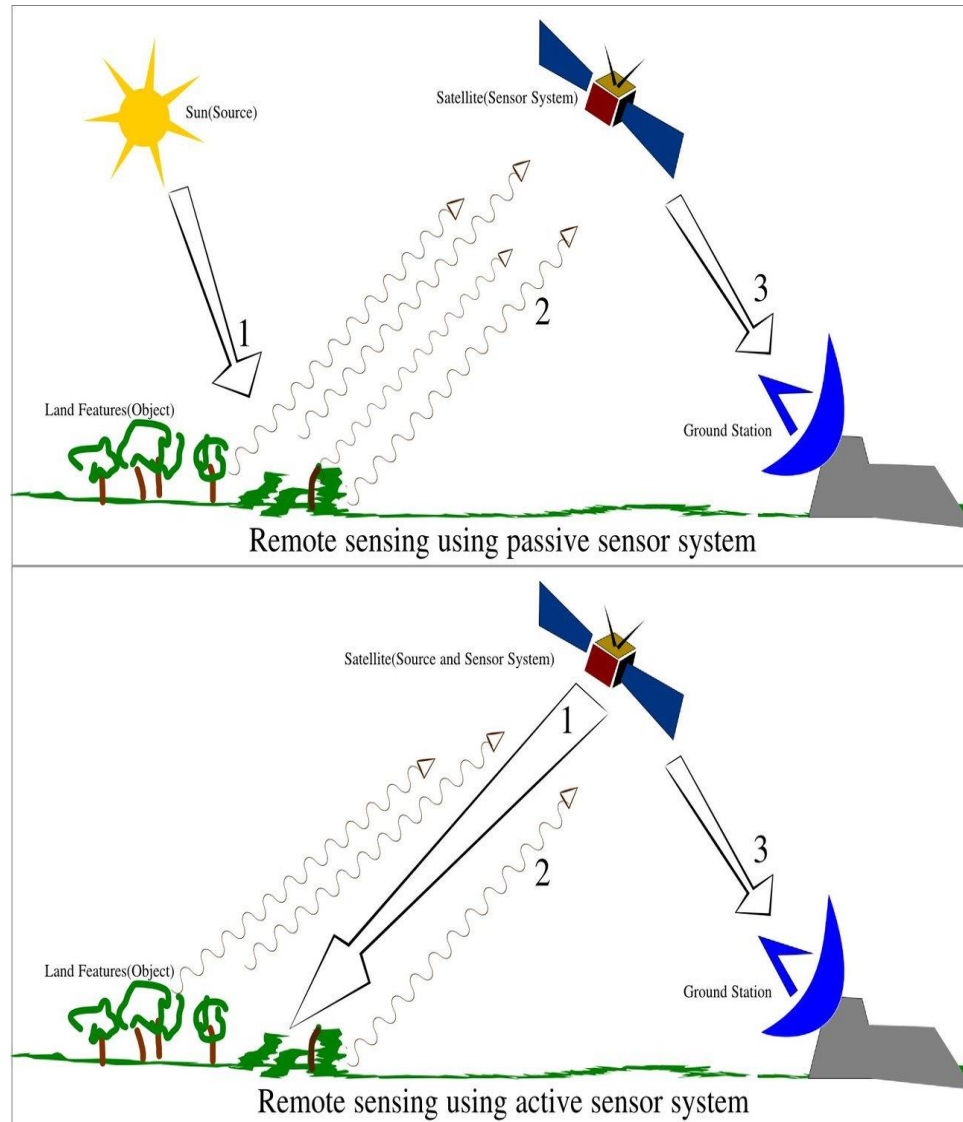


GPS (Global Positioning System)

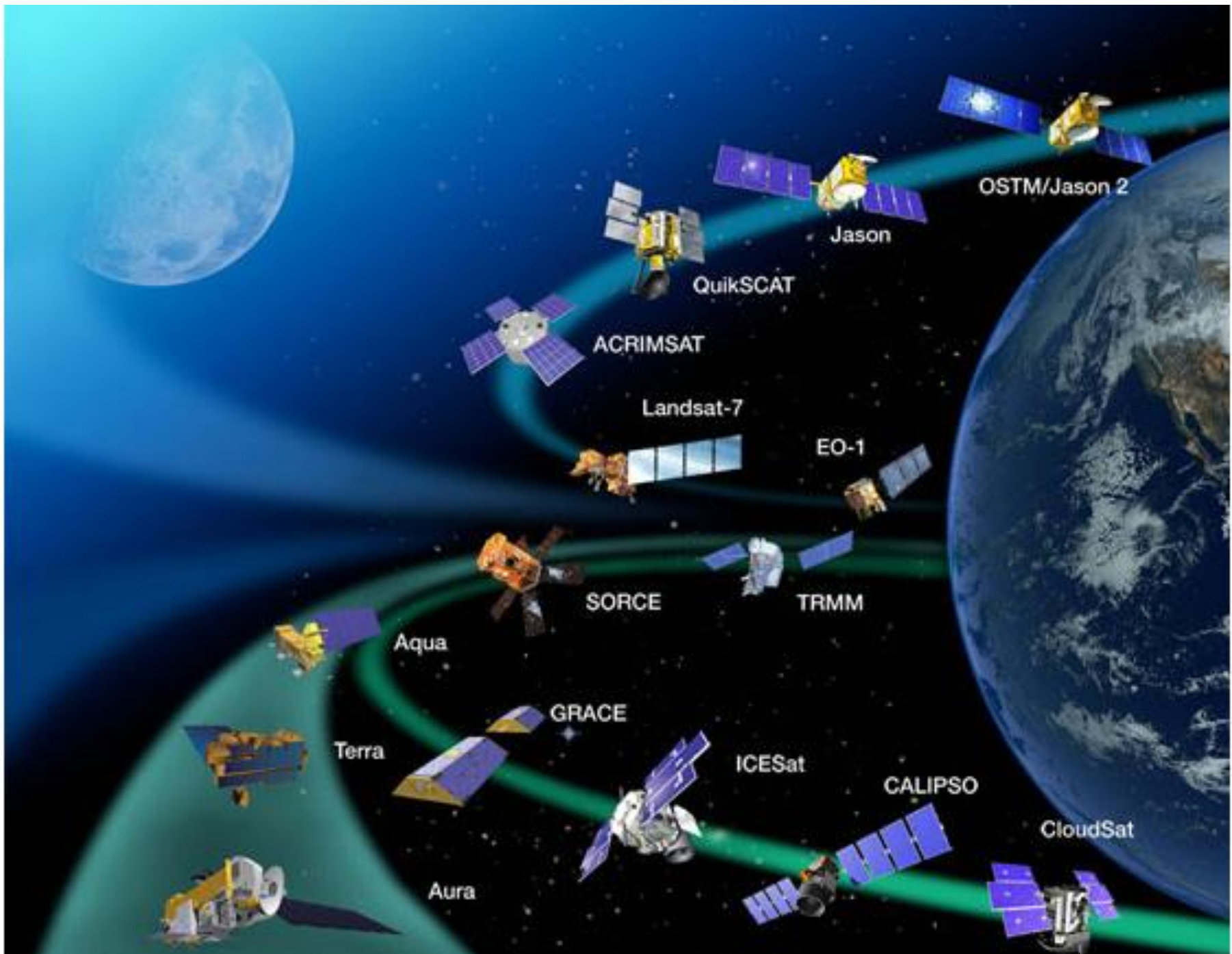


Source: Google.com

What is remote sensing?

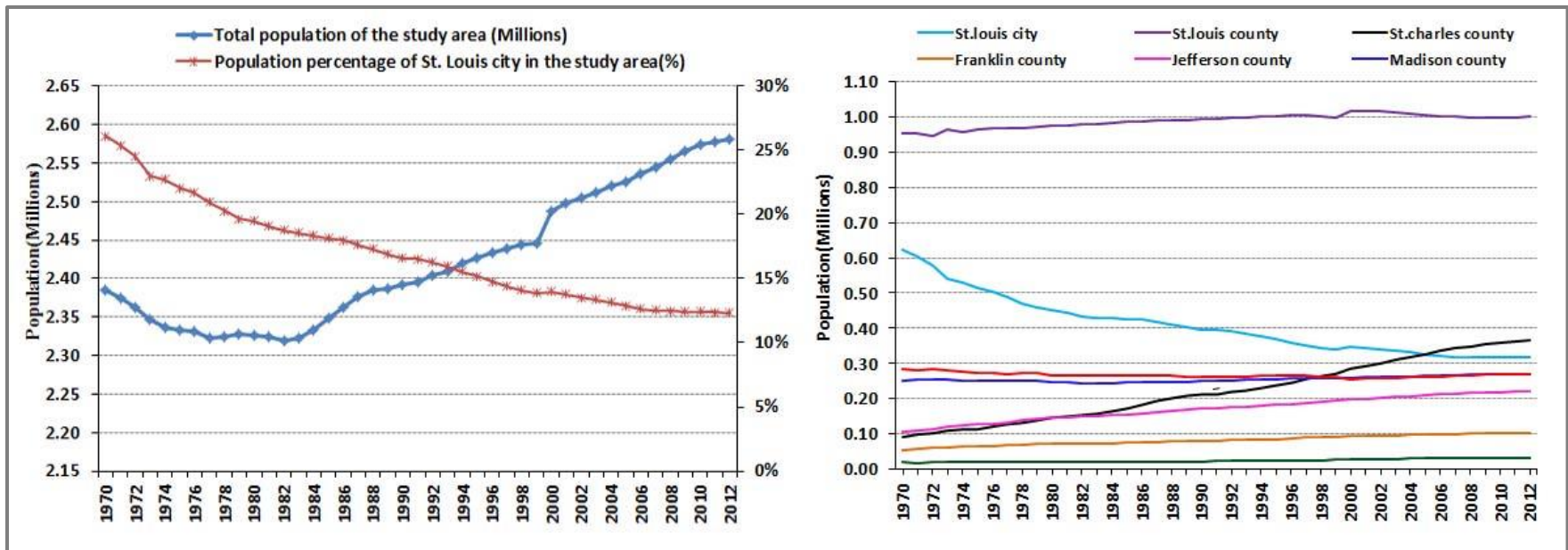


wikipedia.org

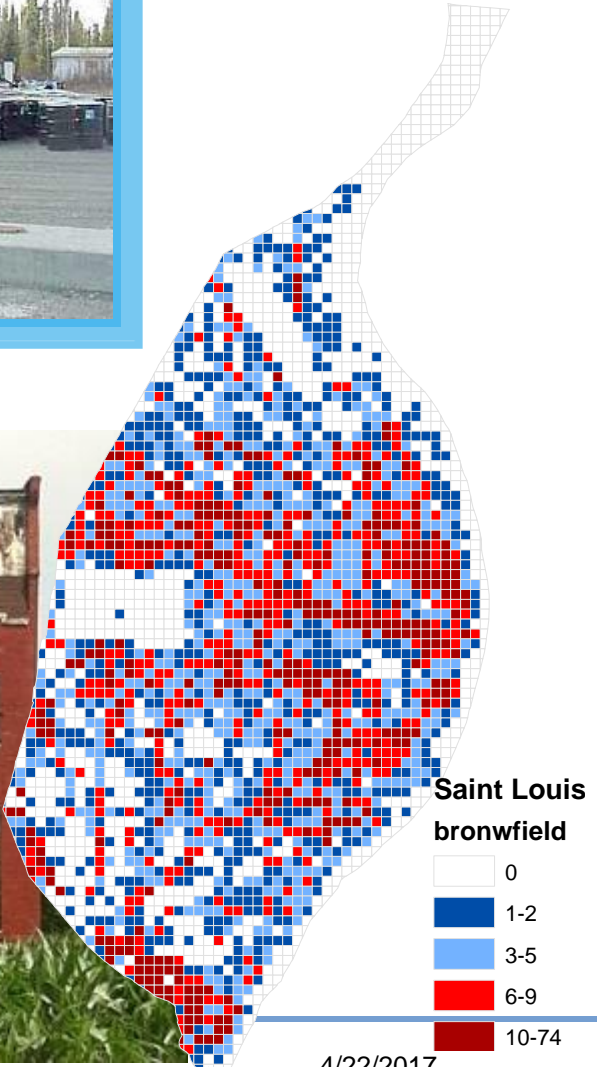


Saint Louis

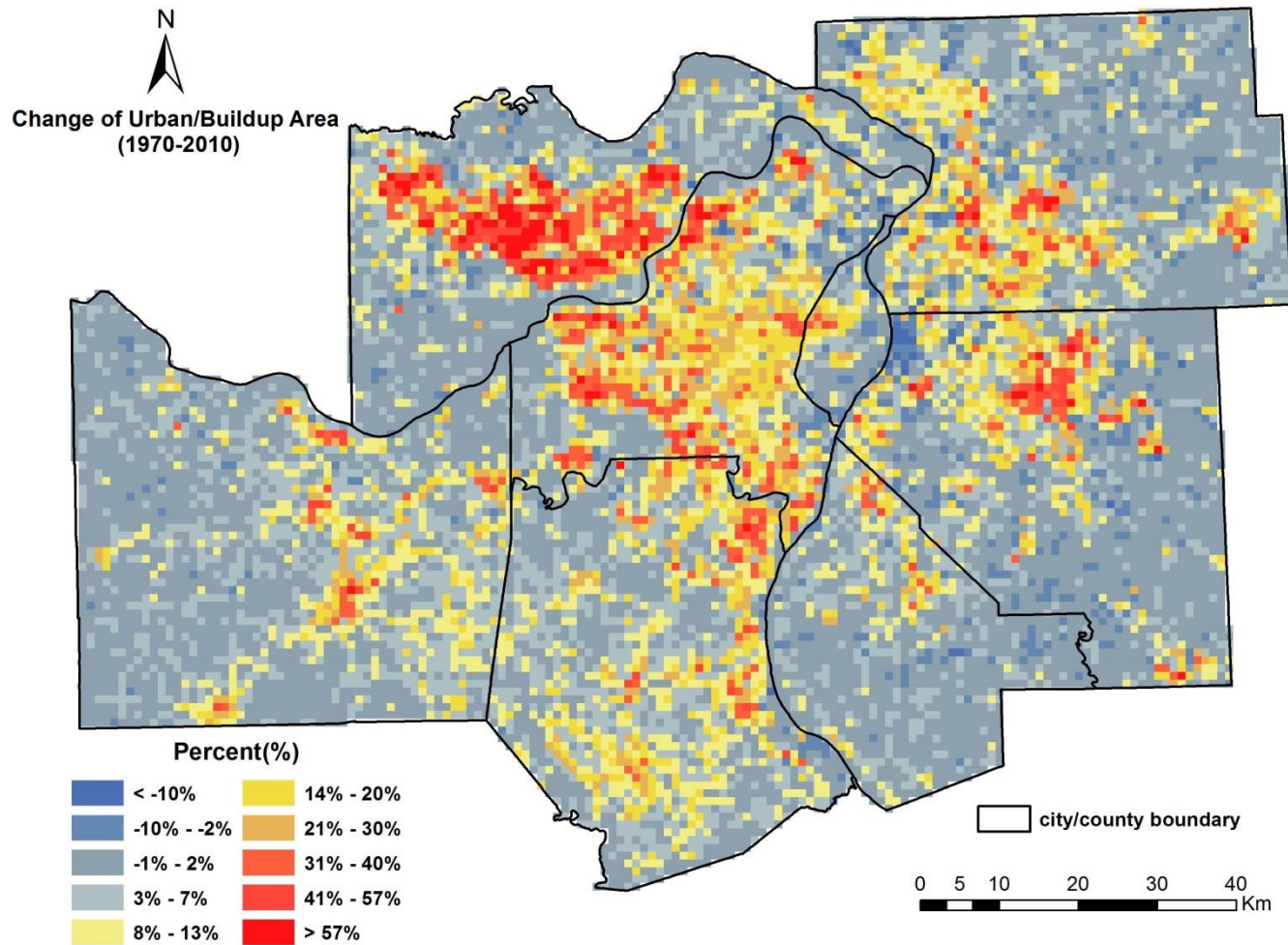
In 1904, 3rd largest city in US, hosted summer Olympics



Abandoned urban infrastructure

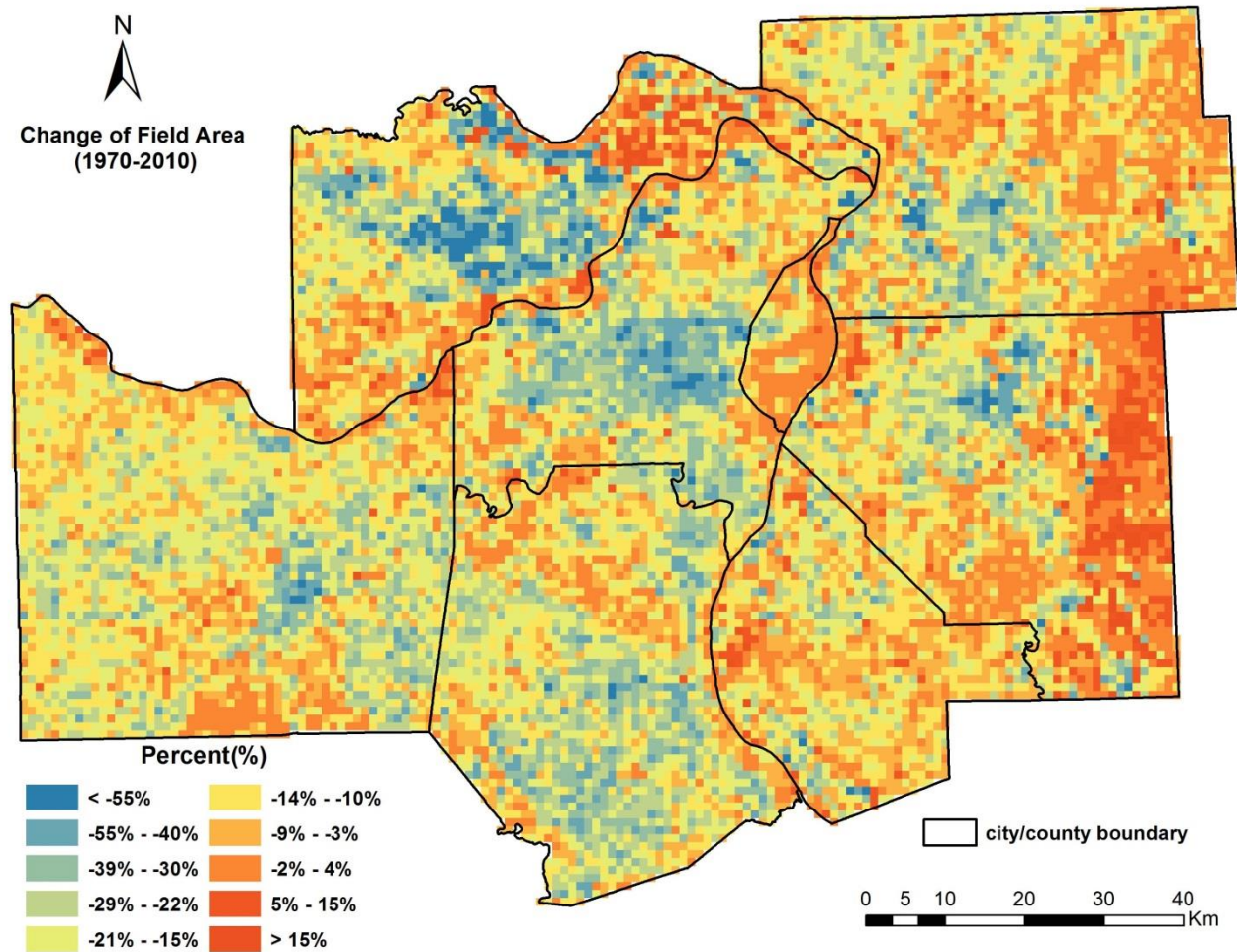


Urban area change from 1970 -2010



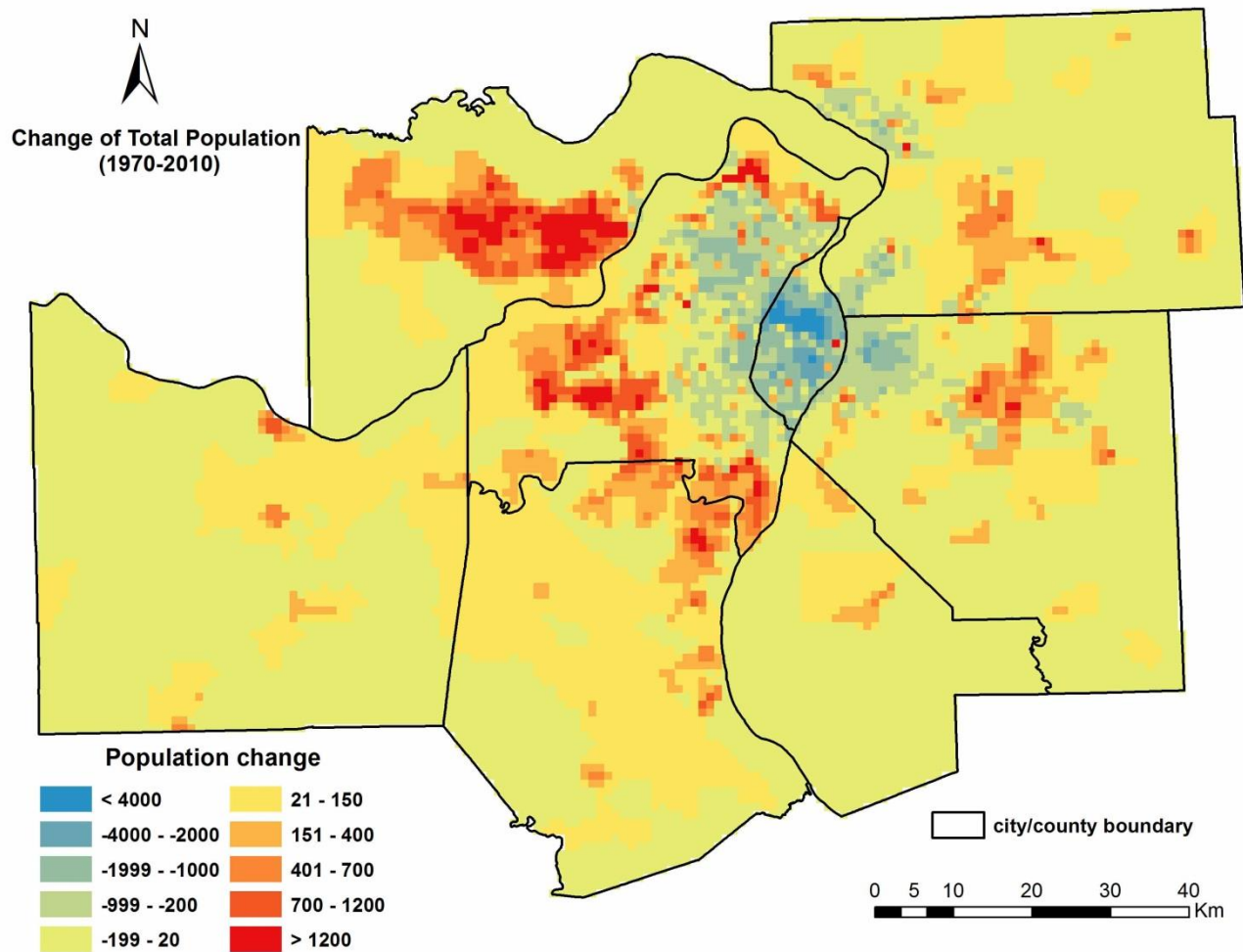
Maimaitijiang, M., **Ghulam, A.**, Sandoval, J. S. O., Maimaitiyiming, M. (2015). Drivers of land cover and land use changes in St. Louis Metropolitan area over the past 40 years characterized by remote sensing and census population data. *Int. J. Appl. Earth Obs. Geoinf*, 35: 161-174.

Green space change from 1970 -2010



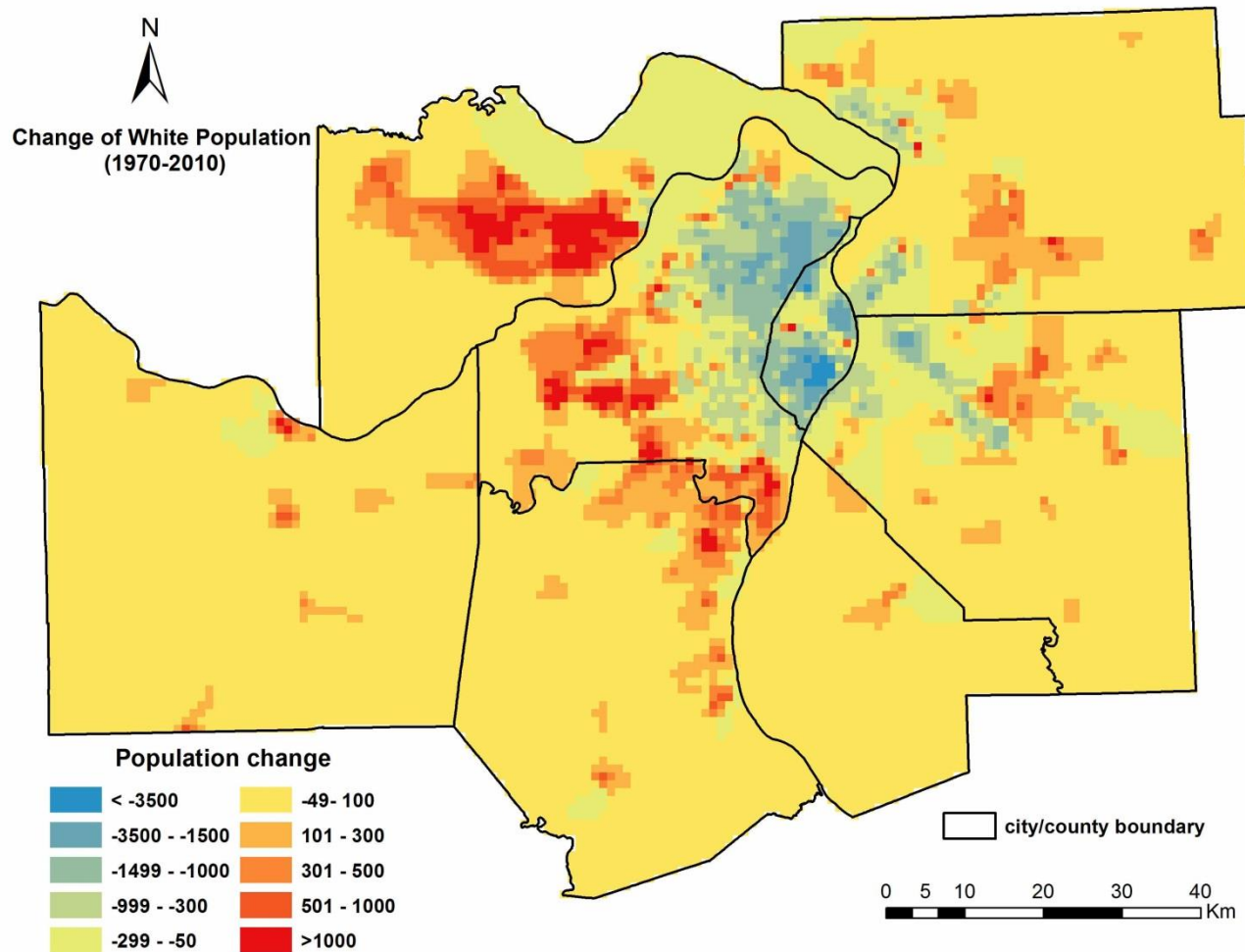
Maimaitijiang, M., **Ghulam, A.**, Sandoval, J. S. O., Maimaitiyiming, M. (2015). Drivers of land cover and land use changes in St. Louis Metropolitan area over the past 40 years characterized by remote sensing and census population data. *Int. J. Appl. Earth Obs. Geoinf*, 35: 161-174.

Population change from 1970 -2010



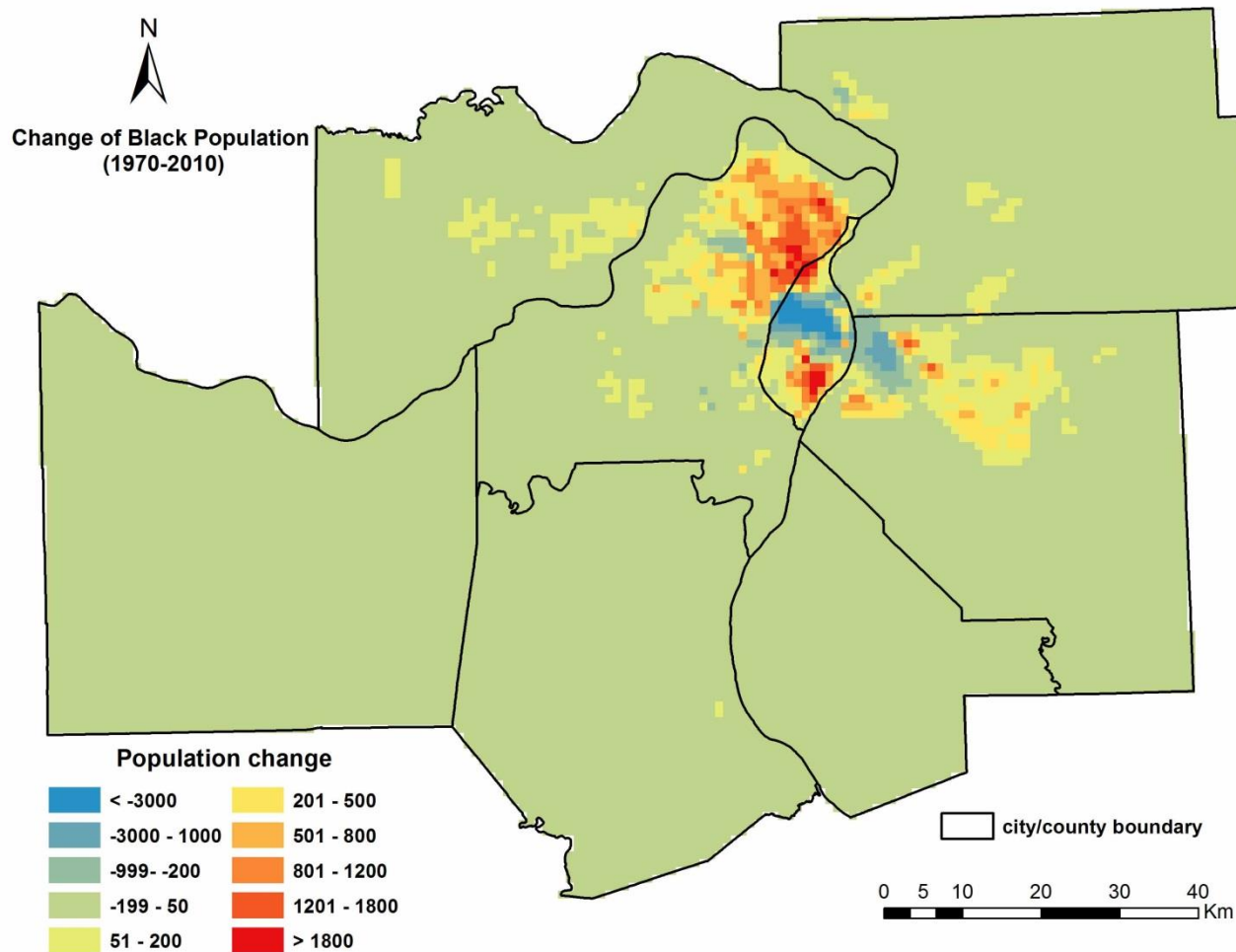
Maimaitijiang, M., **Ghulam, A.**, Sandoval, J. S. O., Maimaitiyiming, M. (2015). Drivers of land cover and land use changes in St. Louis Metropolitan area over the past 40 years characterized by remote sensing and census population data. *Int. J. Appl. Earth Obs. Geoinf.* 35: 161-174.

Population change from 1970 -2010



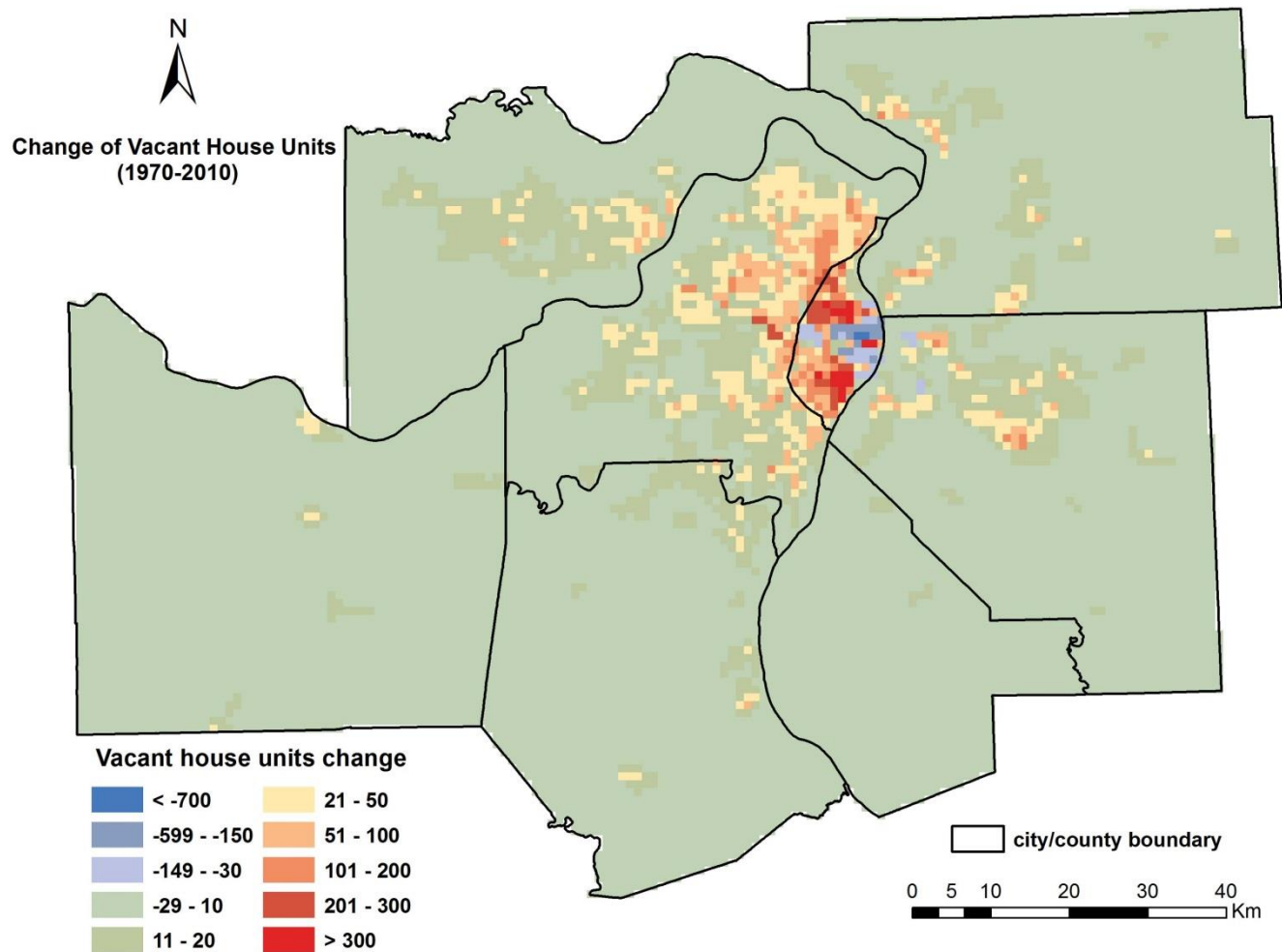
Maimaitijiang, M., **Ghulam, A.**, Sandoval, J. S. O., Maimaitiyiming, M. (2015). Drivers of land cover and land use changes in St. Louis Metropolitan area over the past 40 years characterized by remote sensing and census population data. *Int. J. Appl. Earth Obs. Geoinf*, 35: 161-174.

Population change from 1970 -2010



Maimaitijiang, M., **Ghulam, A.**, Sandoval, J. S. O., Maimaitiyiming, M. (2015). Drivers of land cover and land use changes in St. Louis Metropolitan area over the past 40 years characterized by remote sensing and census population data. *Int. J. Appl. Earth Obs. Geoinf.*, 35: 161-174.

Vacant Housing Units from 1970 -2010



Maimaitijiang, M., **Ghulam, A.**, Sandoval, J. S. O., Maimaitiyiming, M. (2015). Drivers of land cover and land use changes in St. Louis Metropolitan area over the past 40 years characterized by remote sensing and census population data. *Int. J. Appl. Earth Obs. Geoinf.*, 35: 161-174.

Redefining remote sensing

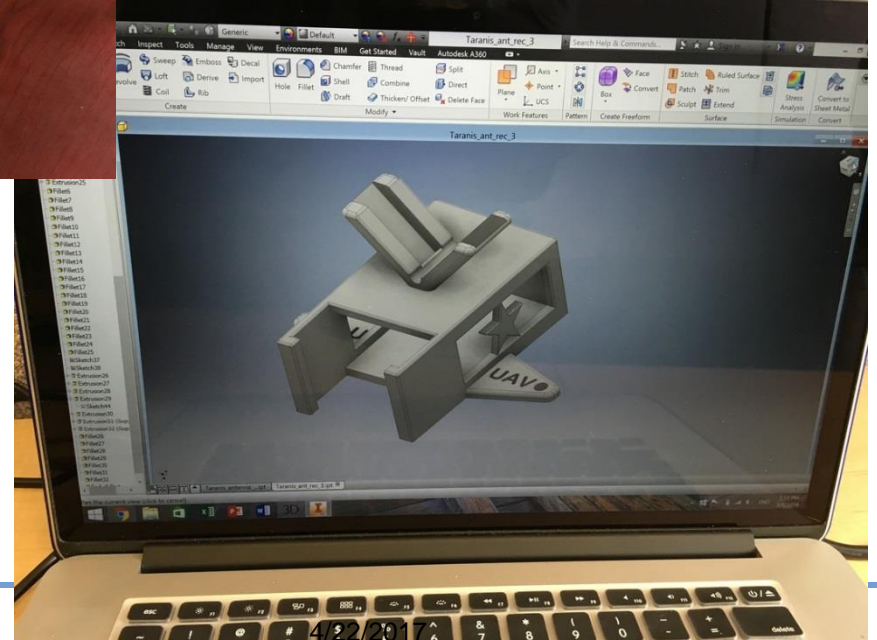


What is an Unmanned Aerial System (UAS)?

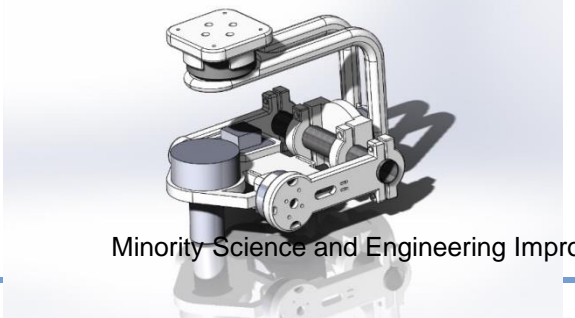
- What are they called:
 - Unmanned Aircraft System (UAS) (FAA and Congress)
 - Unmanned Aerial Vehicle (UAV)
 - Remotely Piloted Aircraft Systems (RPAS) (ICAO and Air Force)
 - *Drones*



Emerging technology



Grass roots efforts to UAS



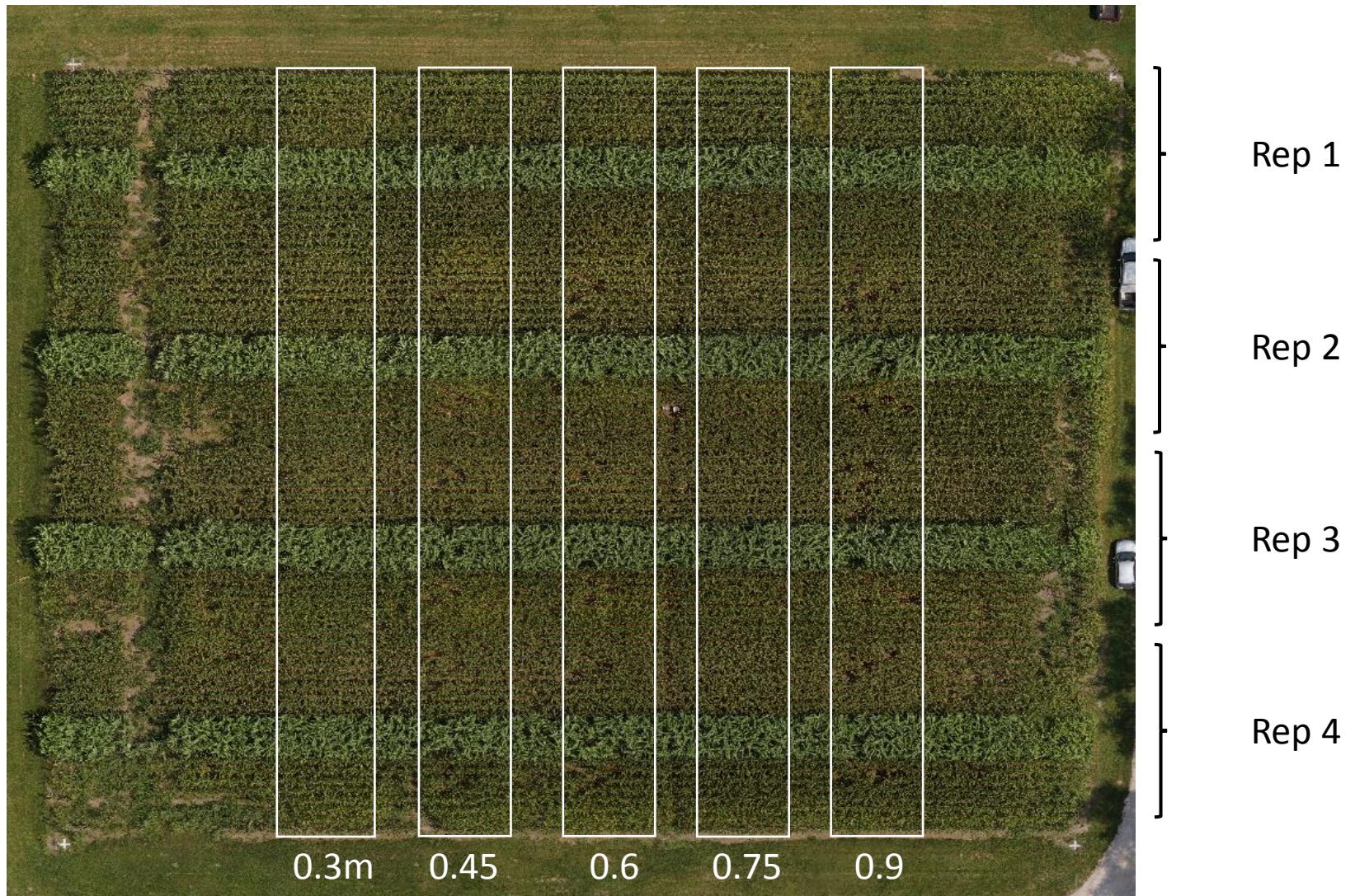
Minority Science and Engineering Improvement Program (MSEIP) Conference 2017

4/22/2017

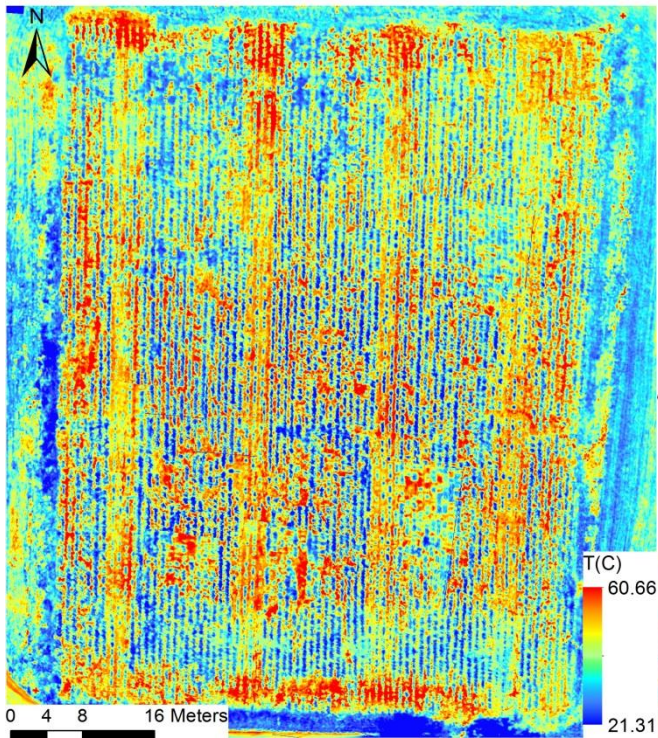
Case studies

DRONES FOR URBAN AGRICULTURE

RGB imaging

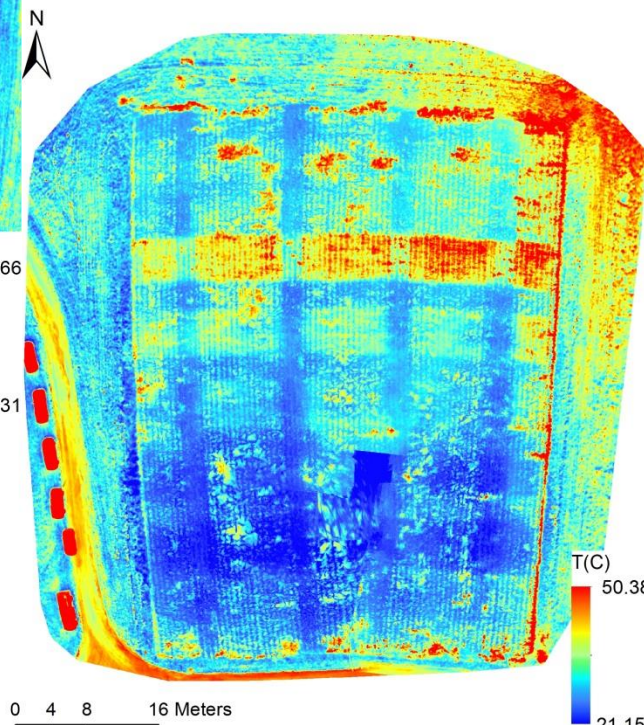


Jun.02, 2016 Cornfield

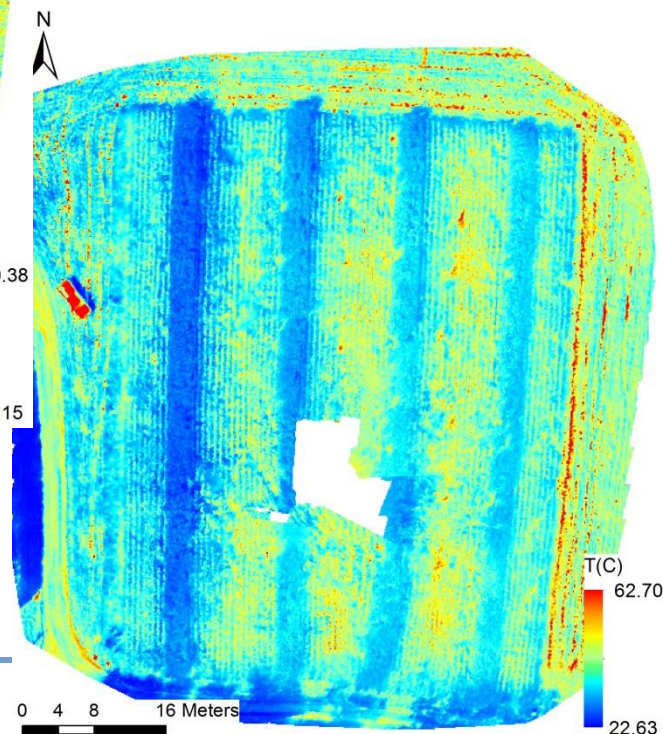


Corn Field Thermal Orthomosaic

Jun.28, 2016 Cornfield



Sep.02, 2016 Cornfield

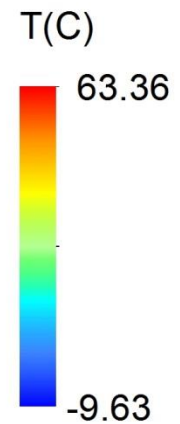
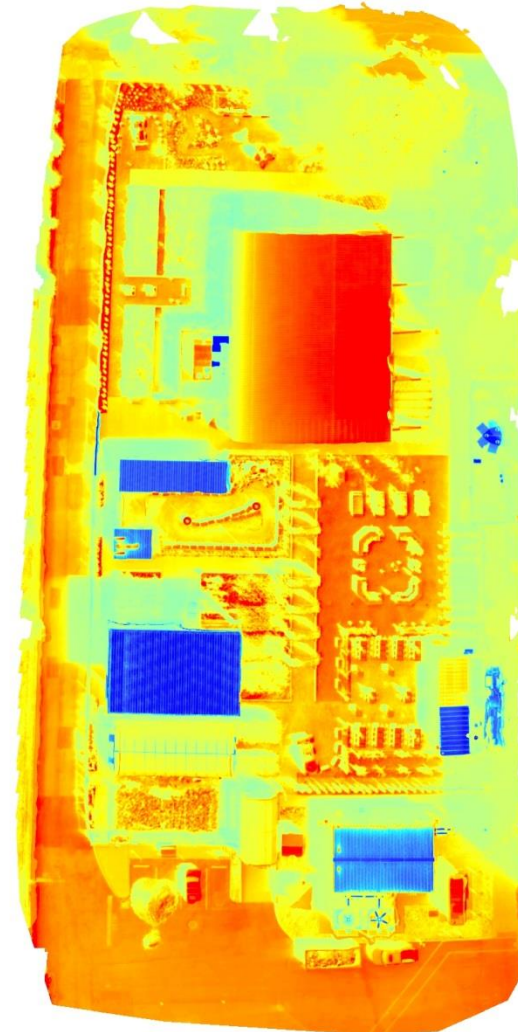


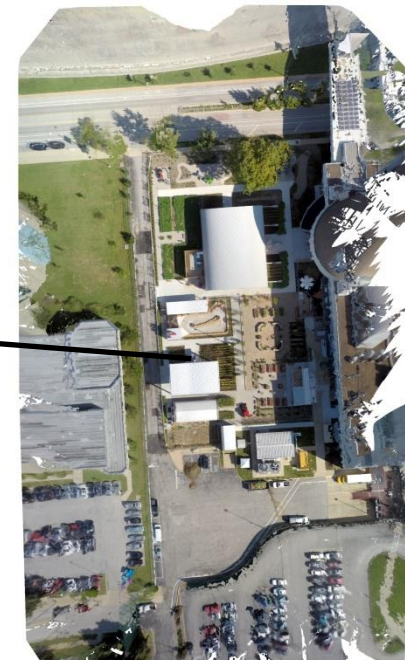
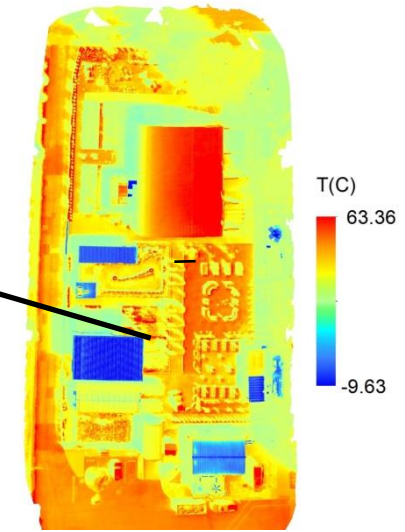
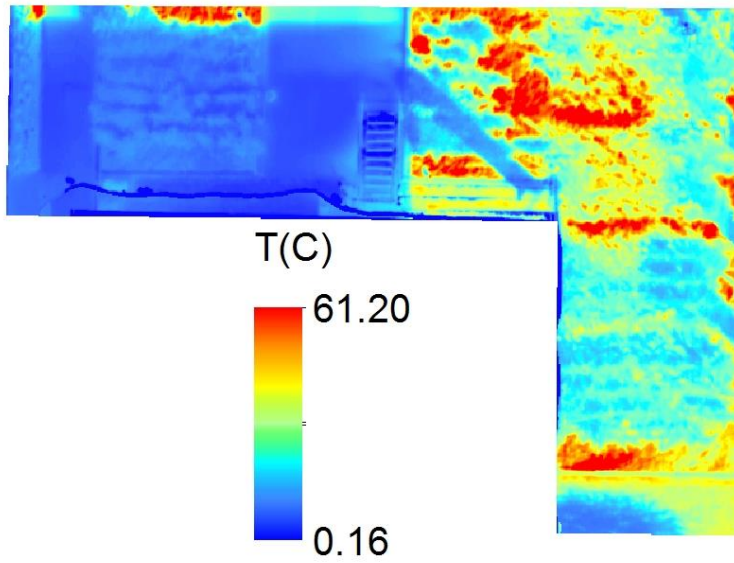
Robots and Drones at Saint Louis Science Center



Saint Louis Science Center Grow Exhibit (Sep.22, 2016)

Thermal



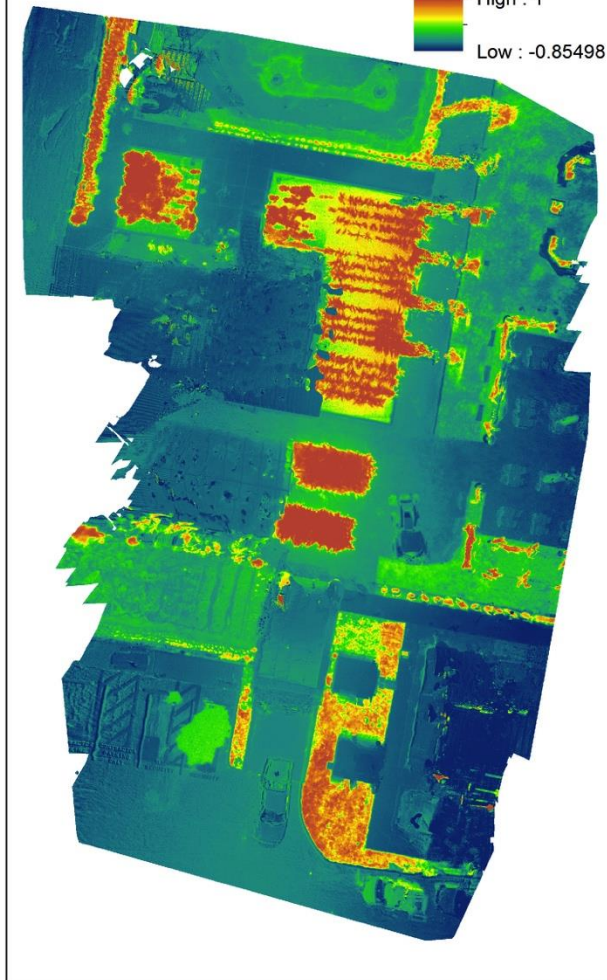


St. Louis Science Center Data collection

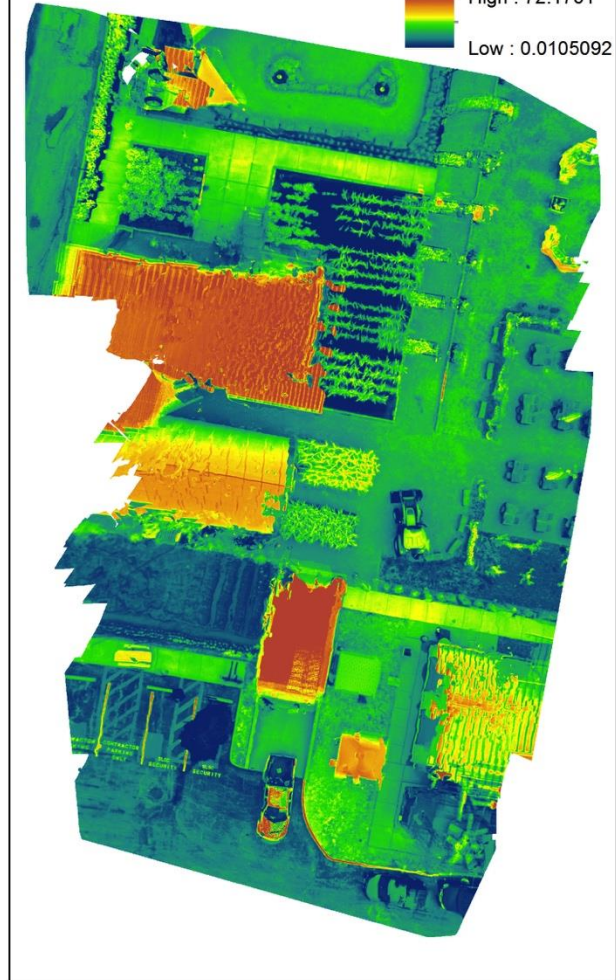
Sequoia RGB



NDVI
High : 1
Low : -0.85498



Red Edge Index
High : 72.1761
Low : 0.0105092



3D Map of the Science Center



Thank you



SAINT LOUIS
UNIVERSITY™
— EST. 1818 —



Center for
Sustainability
SAINT LOUIS UNIVERSITY



MISSOURI TRANSECT

MISSOURI
EPSCOR